



NETWORK EFFECT:

Twin Cities Transit Past, Present, and Future

Adele Hall, AICP

Senior Associate Transit Planner, SRF Consulting

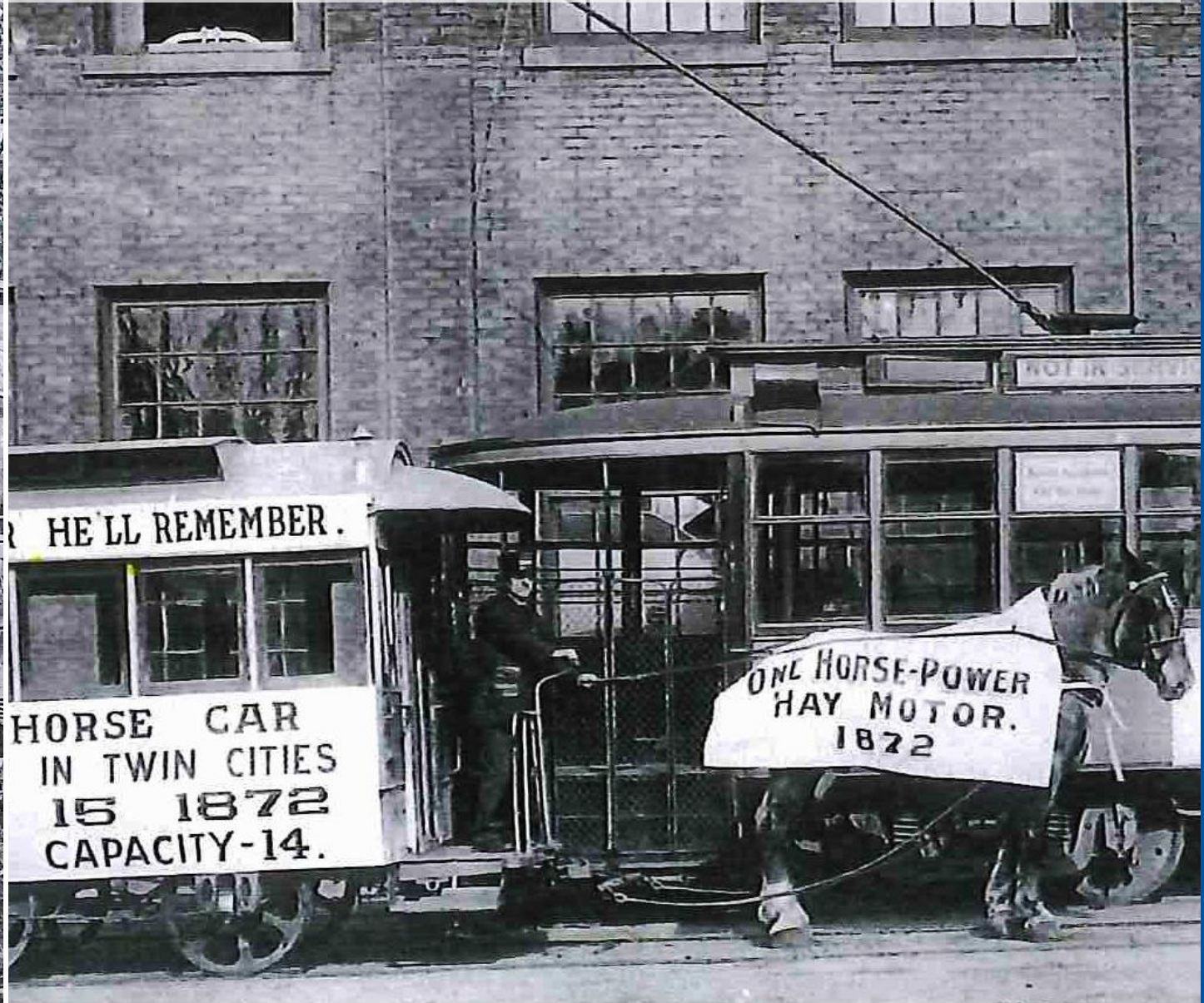
Kristin Thompson

Assistant Director of Service Development, Metro Transit

Katie Roth

Manager of Arterial Bus Rapid Transit, Metro Transit

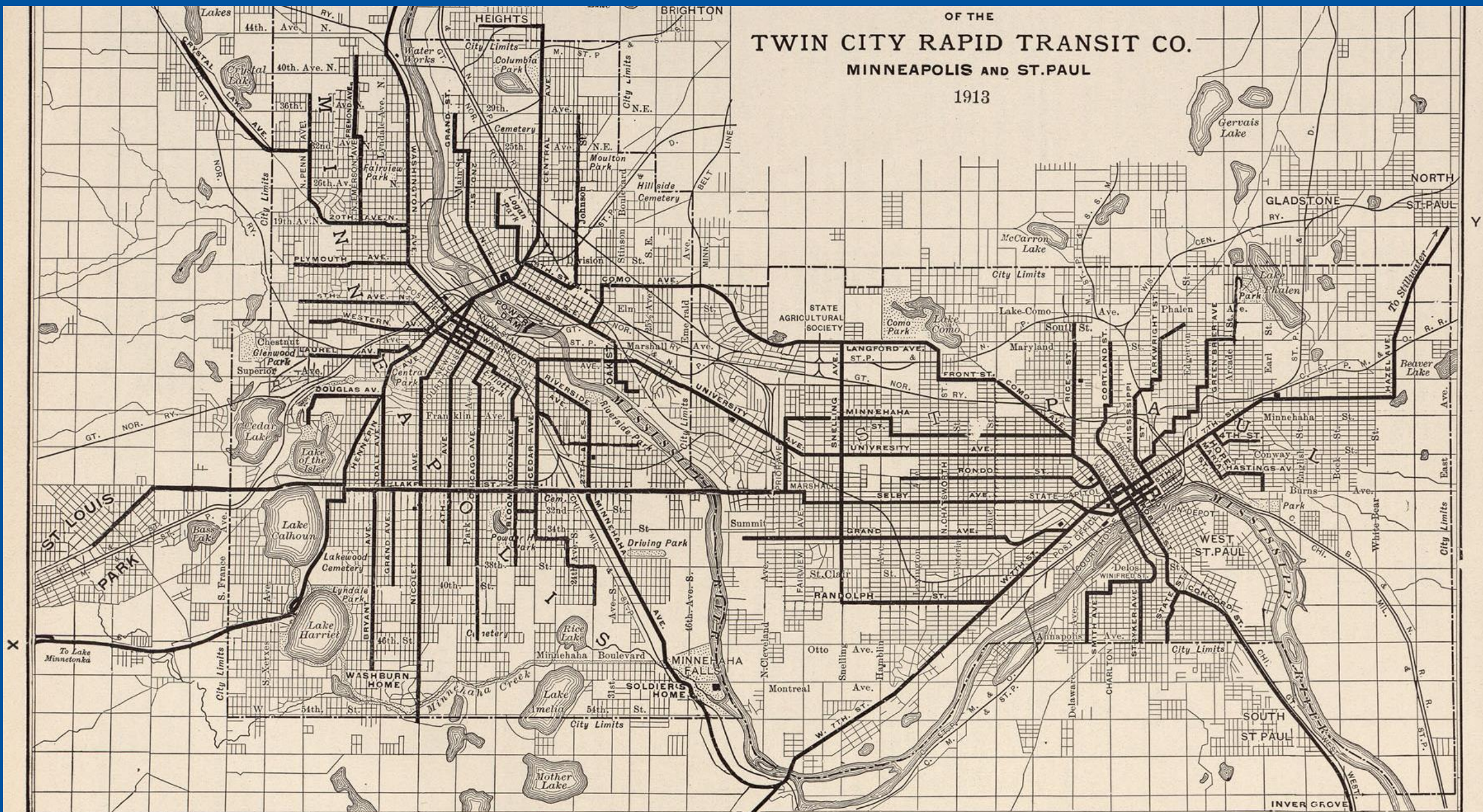
Pre 1900: Horsecars and Twin City Lines



1890s – 1950s: Streetcars and TCRT



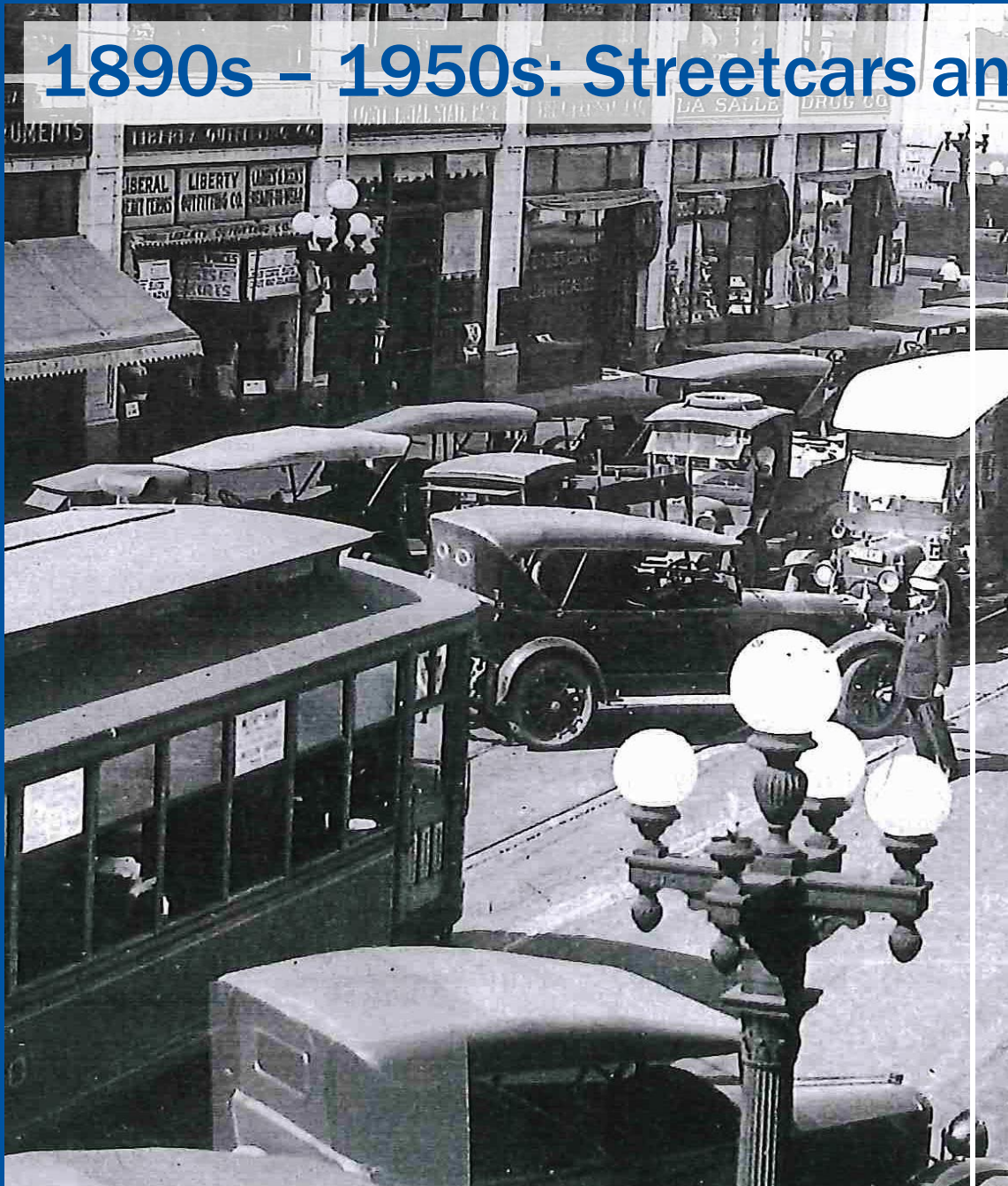
1913



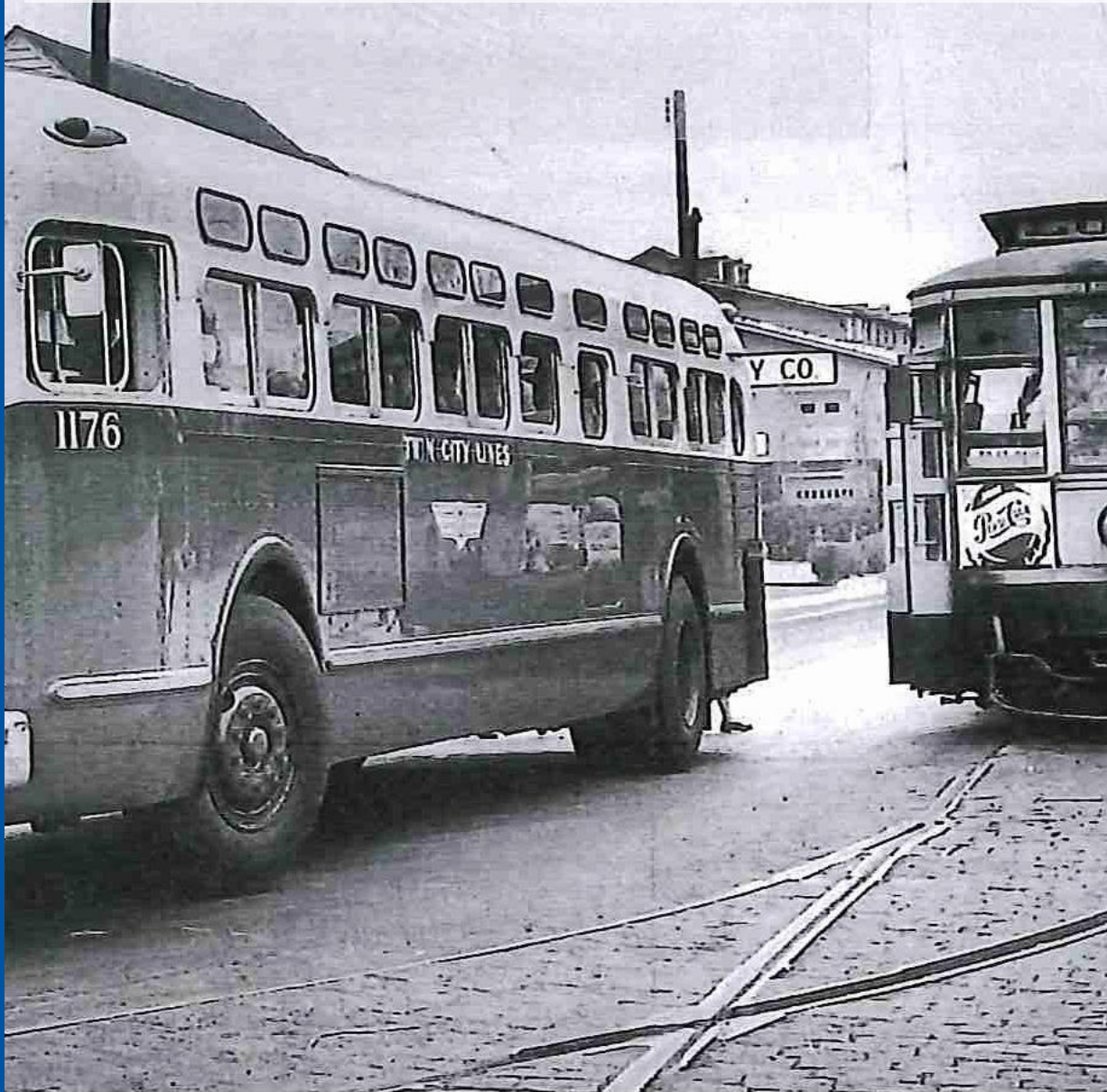
1890s – 1950s: Streetcars and Twin City Lines



SRE



1950s – 1960s: Buses and Twin City Lines



1970s – 1980s: Transit Disinvestment and MTC

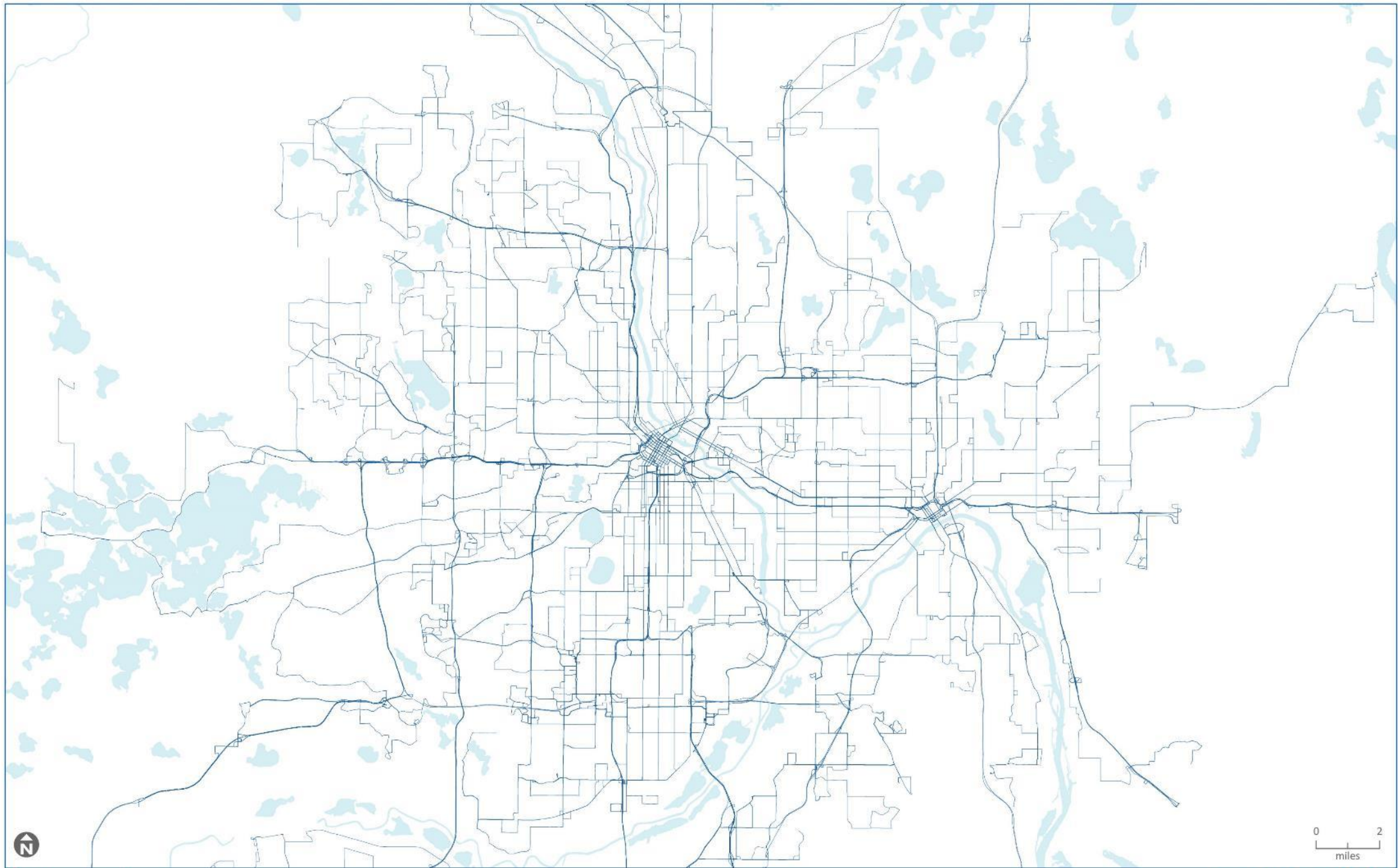


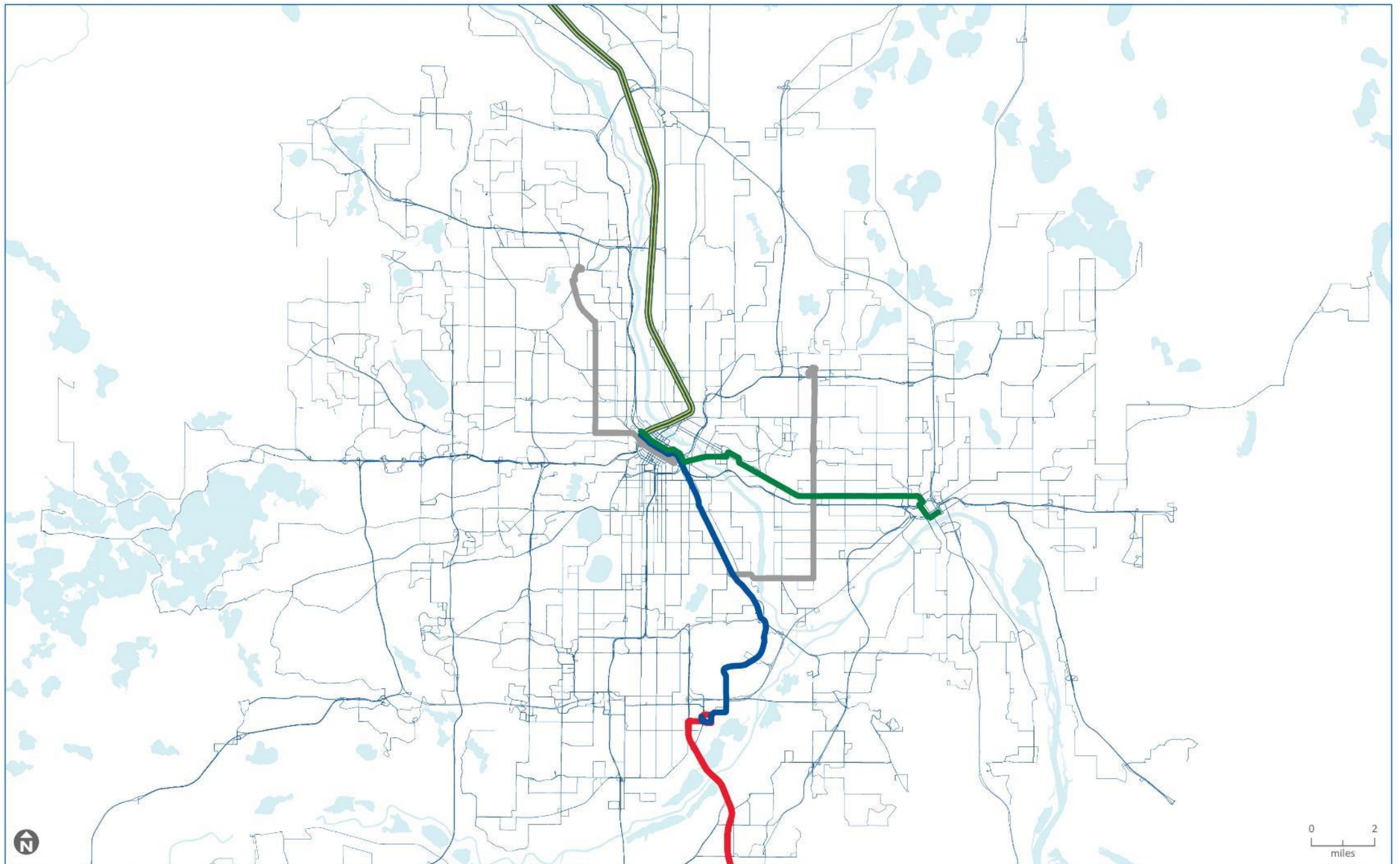
1990s: Transit Adaptation

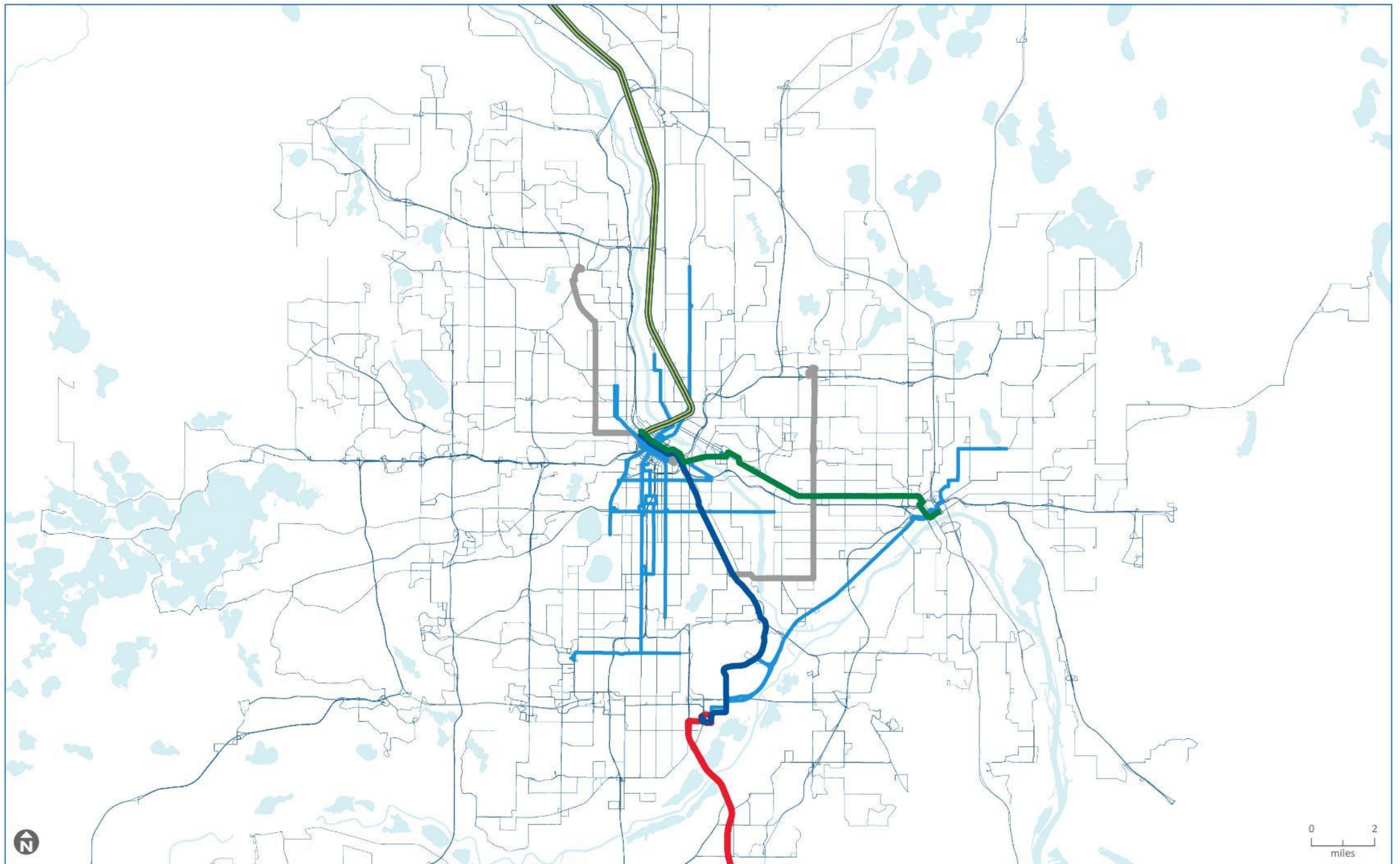


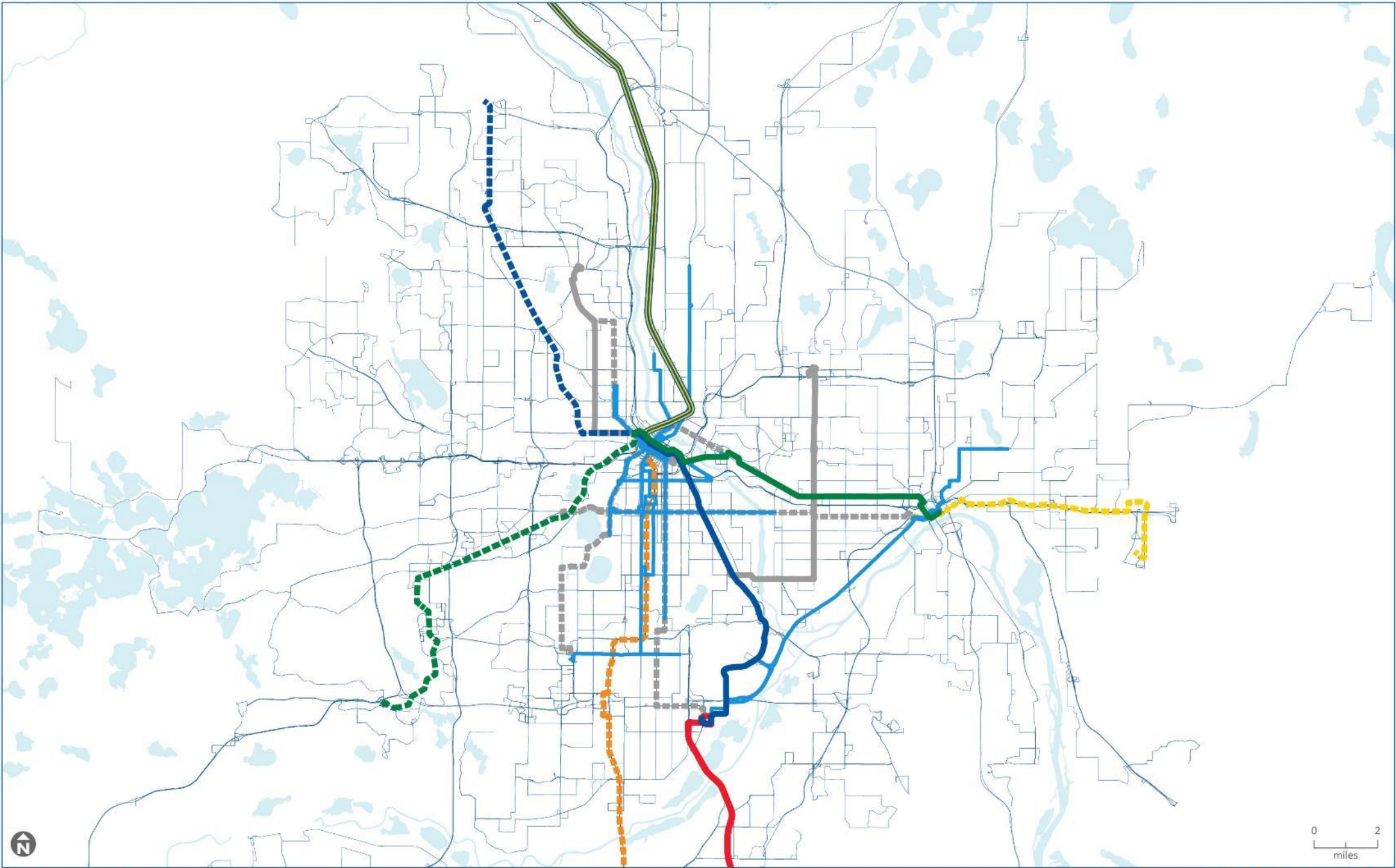
2000: Welcome baby Geoff!











Transit's Mobility Role

80.6 million RIDES

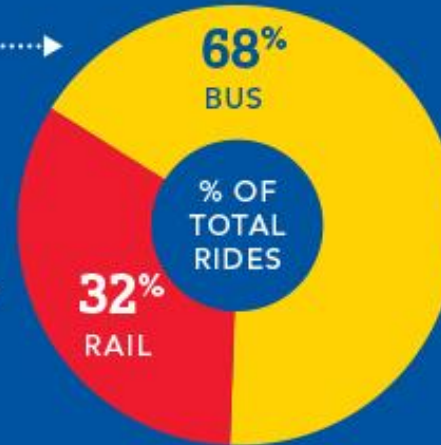
260,486 AVERAGE WEEKDAY RIDERSHIP



54.91 million
RIDES

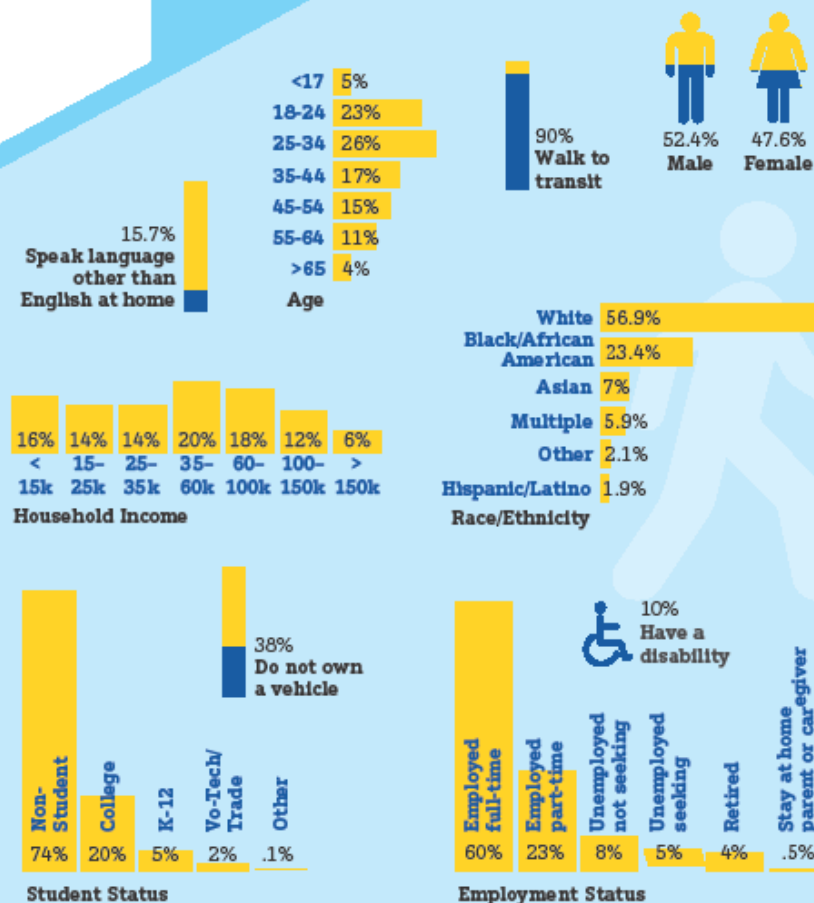


25.74 million
RIDES



Metro Transit Riders

Who rides?



How do they ride?

Local Bus Routes
58%

Top three

Rt. 21 5%

Rt. 18 4%

Rt. 5 6%

A Line 2%

Express Bus Routes 10%

Blue Line 13%

Green Line 16%

Northstar 1%

Where do they go?

Other 1%

Shopping/Appointments/Errands 11.8%

Airport 2%

Social/Recreational 19.4%

School 12.8%

Work 53.2%

BRIEF

APTA: Public Transit in 2018



Credit: Atomic Taco from Seattle, WA, i
Wikimedia Commons



STORE



RIDER ALERTS

WELCOME

Create Account
Sign In

How to Ride

Fares & Passes

Rider Resources

Other ways to get there

search metrotransit.org

Go

Home > Rider's Almanac Blog

Rider's Almanac

METRO TRANSIT'S BLOG

Categories

- A Line BRT (15)
- Accessibility (2)
- Awards (11)
- B Line (1)
- Bicycle (7)
- Bus (206)
- Bus Maintenance (13)
- Bus Rapid Transit (16)
- C Line (10)
- Carpool (4)
- Car-Sharing (1)
- Community (66)
- D Line (3)
- E Line (3)
- Equity (2)
- Express Bus (28)
- Fares (11)
- From the GM (15)
- Go Green (12)
- Good Question (19)
- History Highlight (1)
- How We Roll (18)
- In the News (27)
- Know Your Operator (40)
- Light Rail (72)
- Links of Interest (4)
- METRO Blue Line (61)
- METRO Green Line (87)
- METRO Orange Line (9)
- METRO Red Line (3)
- Metropass (4)
- Midtown Corridor (2)
- Minneapolis (74)
- Northstar (21)

Light rail, Bus Rapid Transit lines set annual ridership records

Posted by Drew Kerr | Monday, February 11, 2019 1:00:00 PM



It was another record-setting year for Metro Transit's light rail and Bus Rapid Transit lines.

The Green Line, Blue Line and A Line each saw their highest annual ridership ever in 2018, breaking records that were set just a year earlier.



TTTERS EVENTS PAPERS NAVIGATOR SECTION

Tech Biz | Emerging Tech | Cloud | Gov Experi

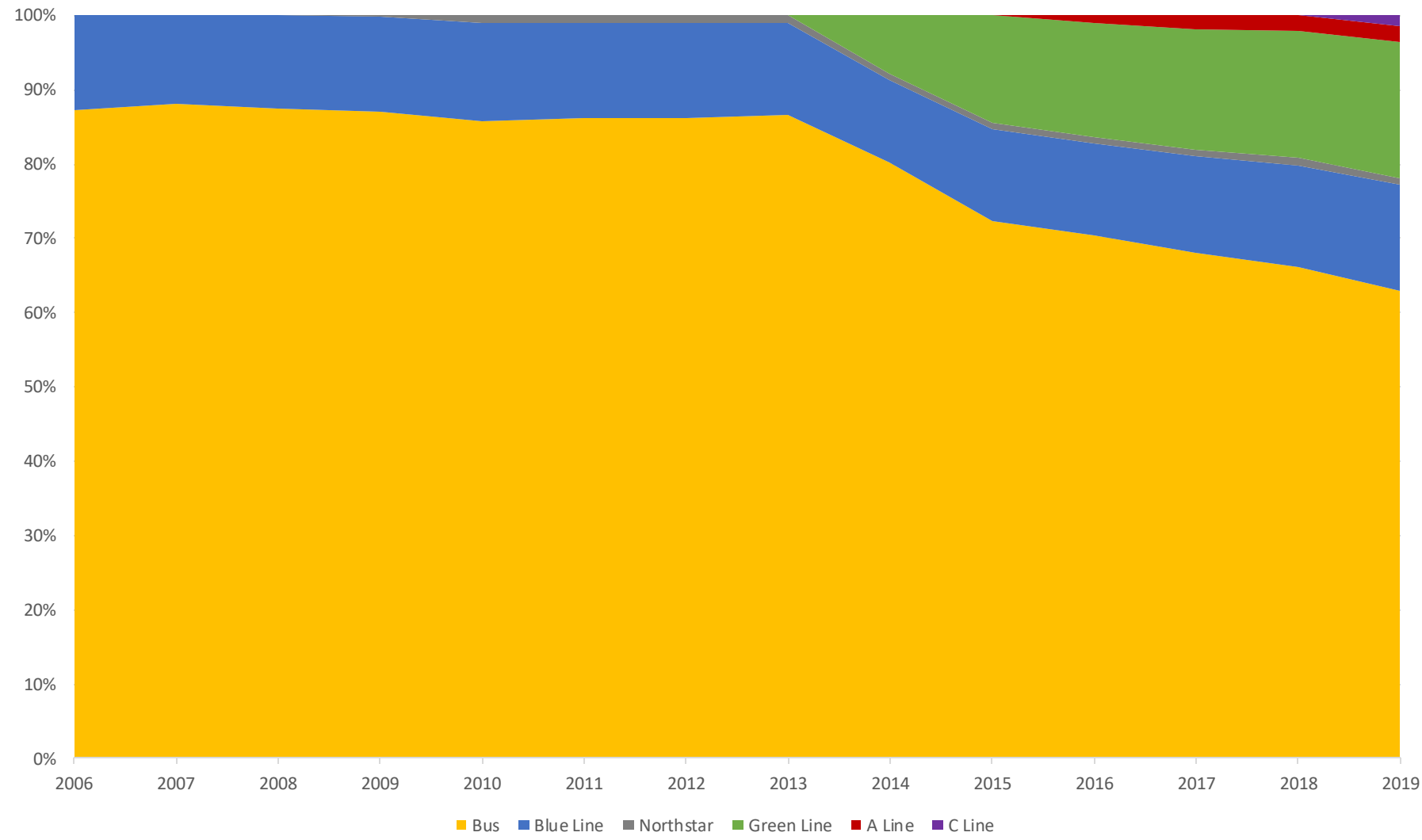
nd Transit Ridership

e year before, continuing a trend of
umber of factors at play, privately





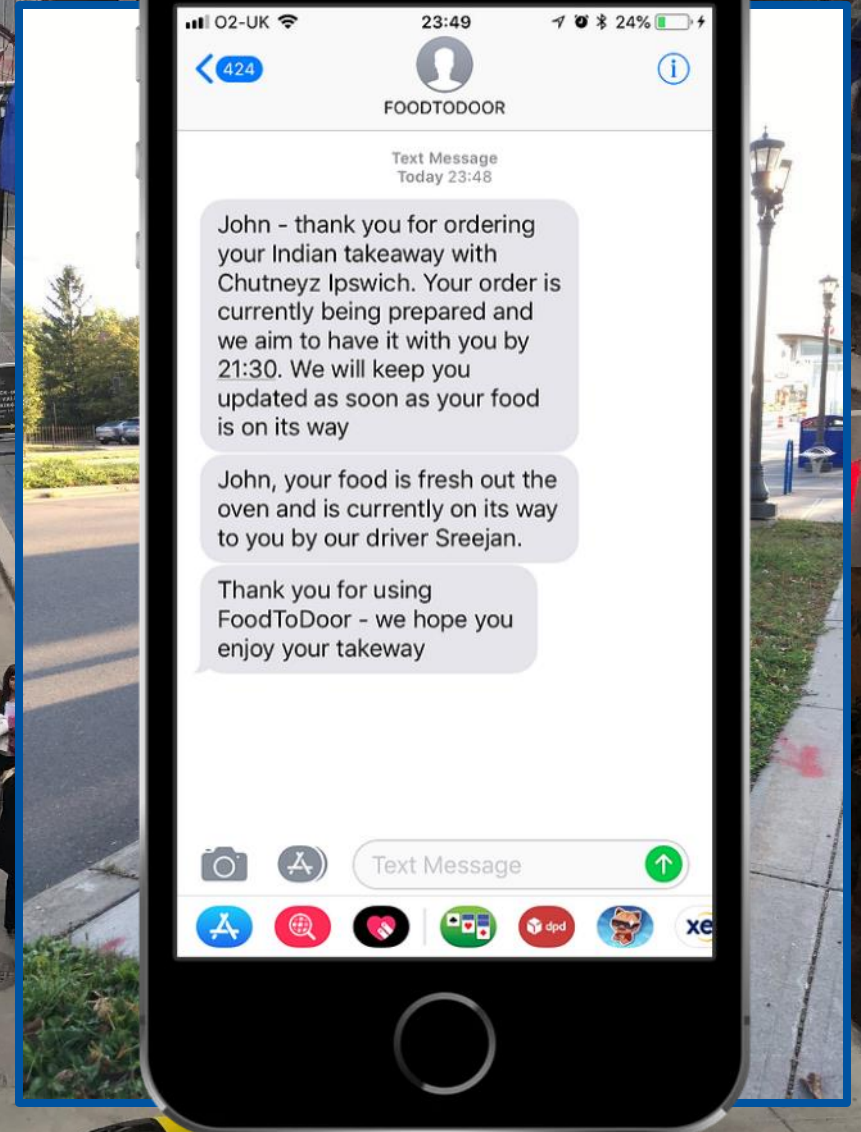
Ridership Share





Challenges:

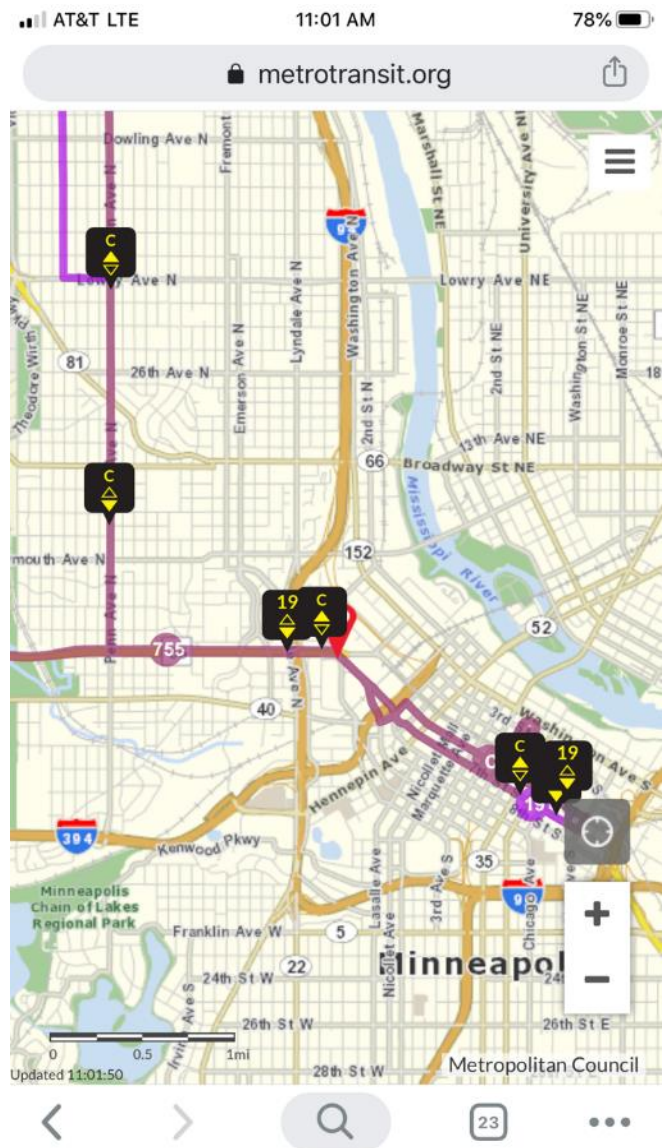
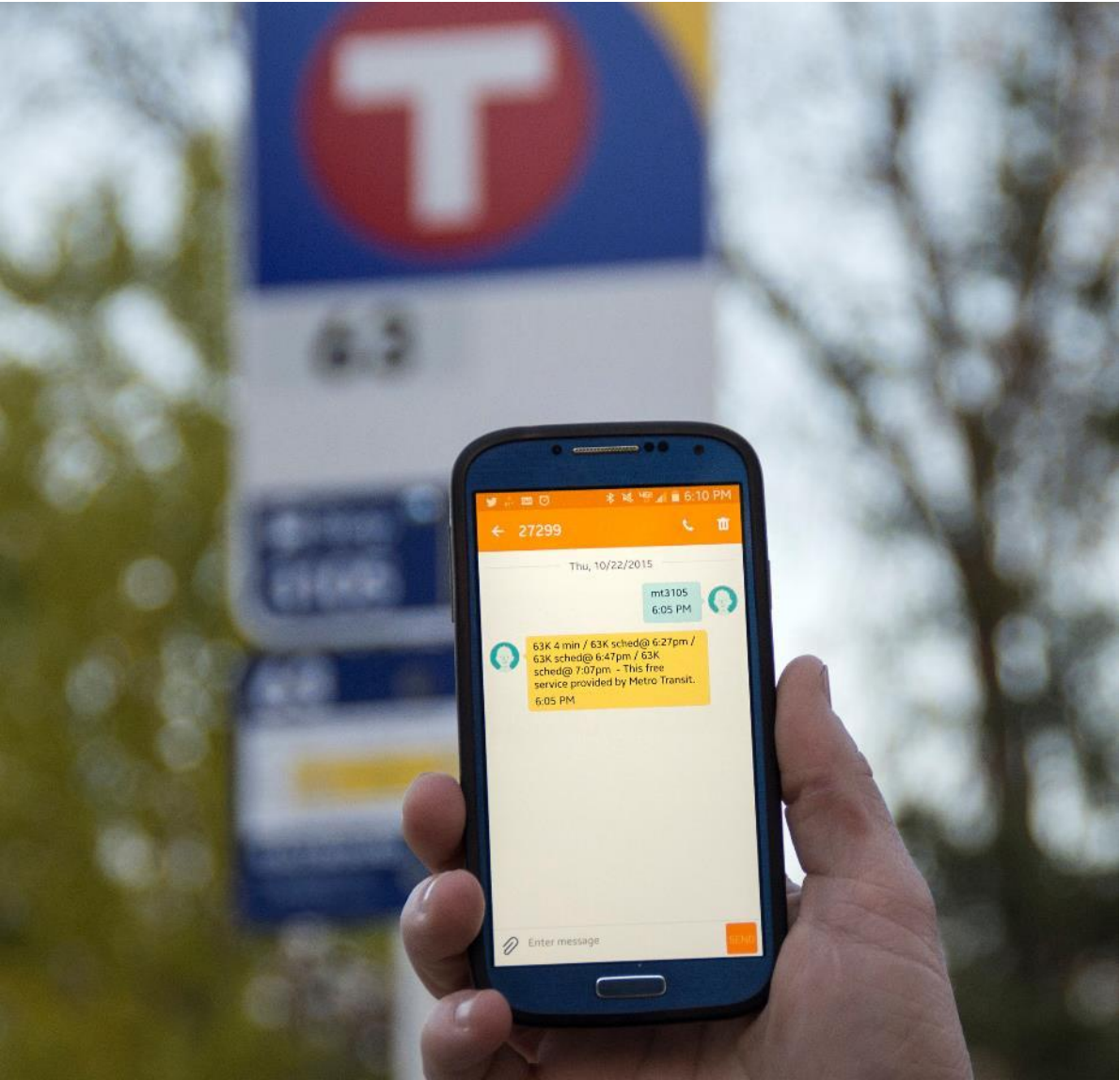
- Constrained & dynamic right of way
- New choices in the marketplace
- Meeting customer expectations



Transit Information Revolution



Transit Information Revolution



Construction mitigation



Bus mode share

65% of
corridor
users

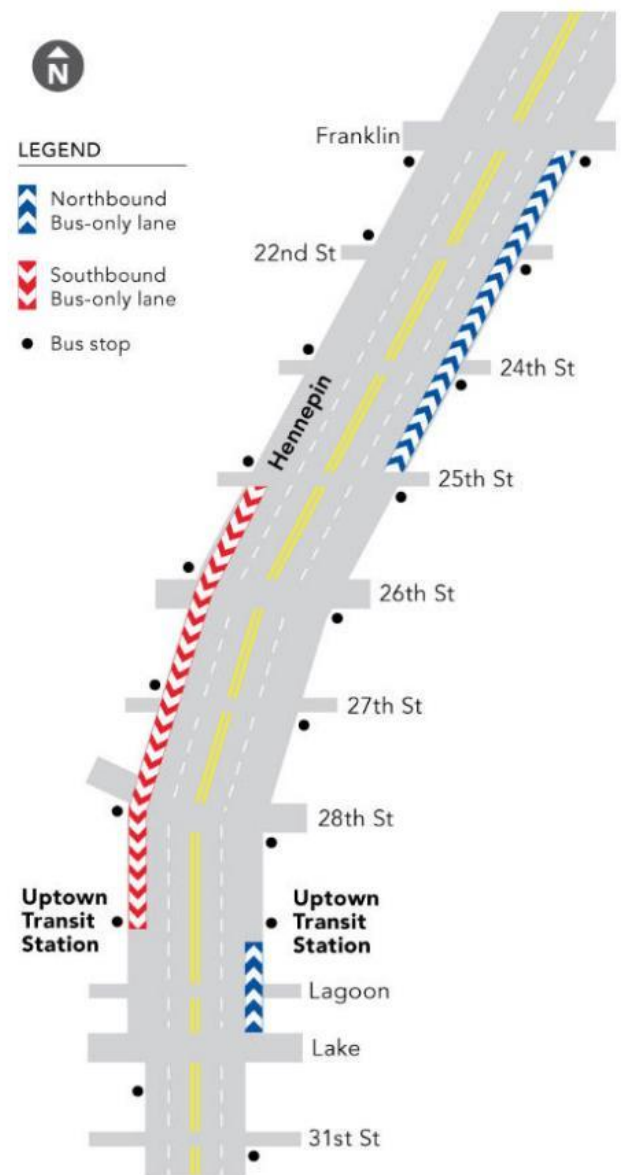
4
5
eastb
2nd



Construction mitigation



Bus Lane Pilots



Better Bus Route Program



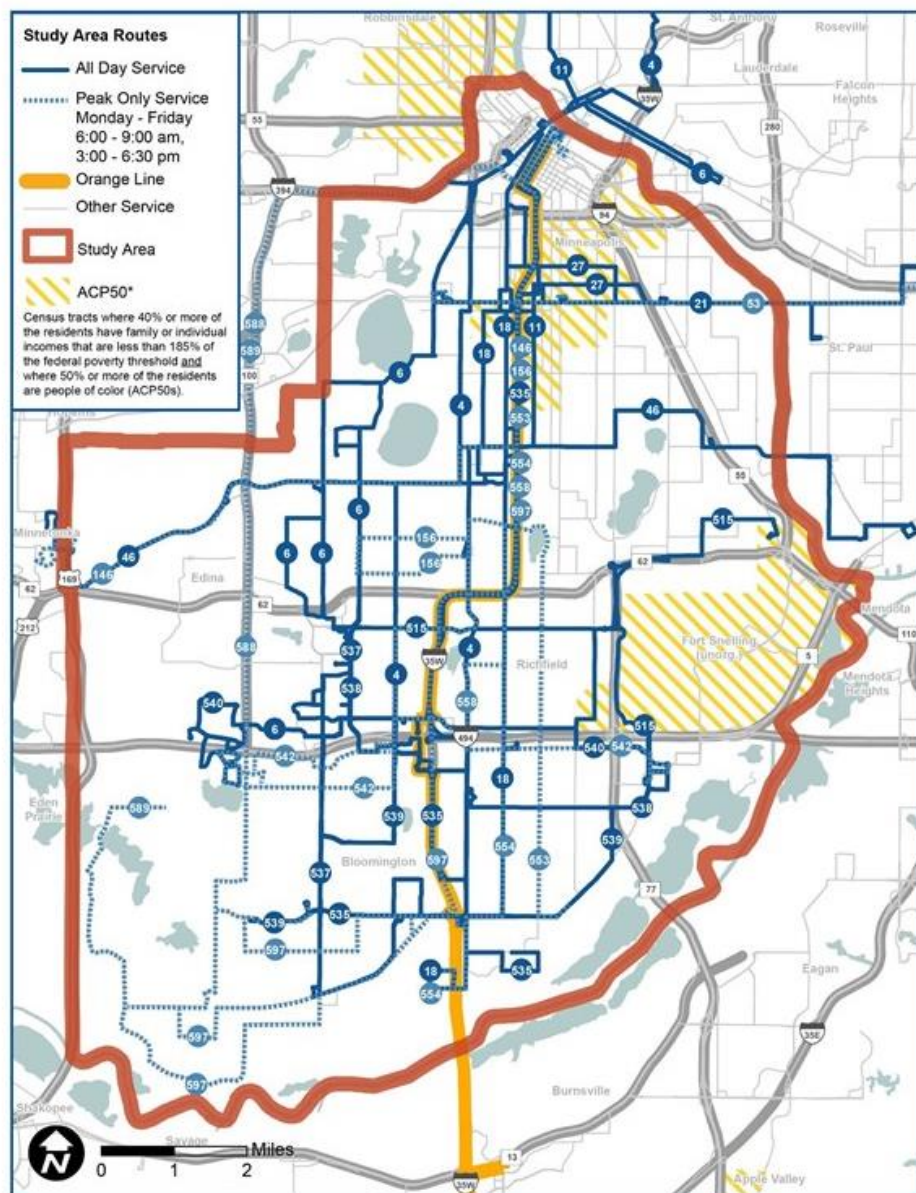
- Toolkit of common-sense improvements for high-ridership local bus routes
 - Stop consolidation
 - Stop improvements
 - Transit signal priority (TSP)
 - Route design
 - Improved frequency
- Route 2 pilot project results:
 - 5-10% speed improvement
 - Almost 90% of boardings now at a sheltered stop



**BETTER
BUS ROUTES**

*Proposed changes
to Route 63!*

- » fewer stops, faster travel
- » buses spend more time moving
- » new bus shelters
- » improved access to bus stops
- » more trips

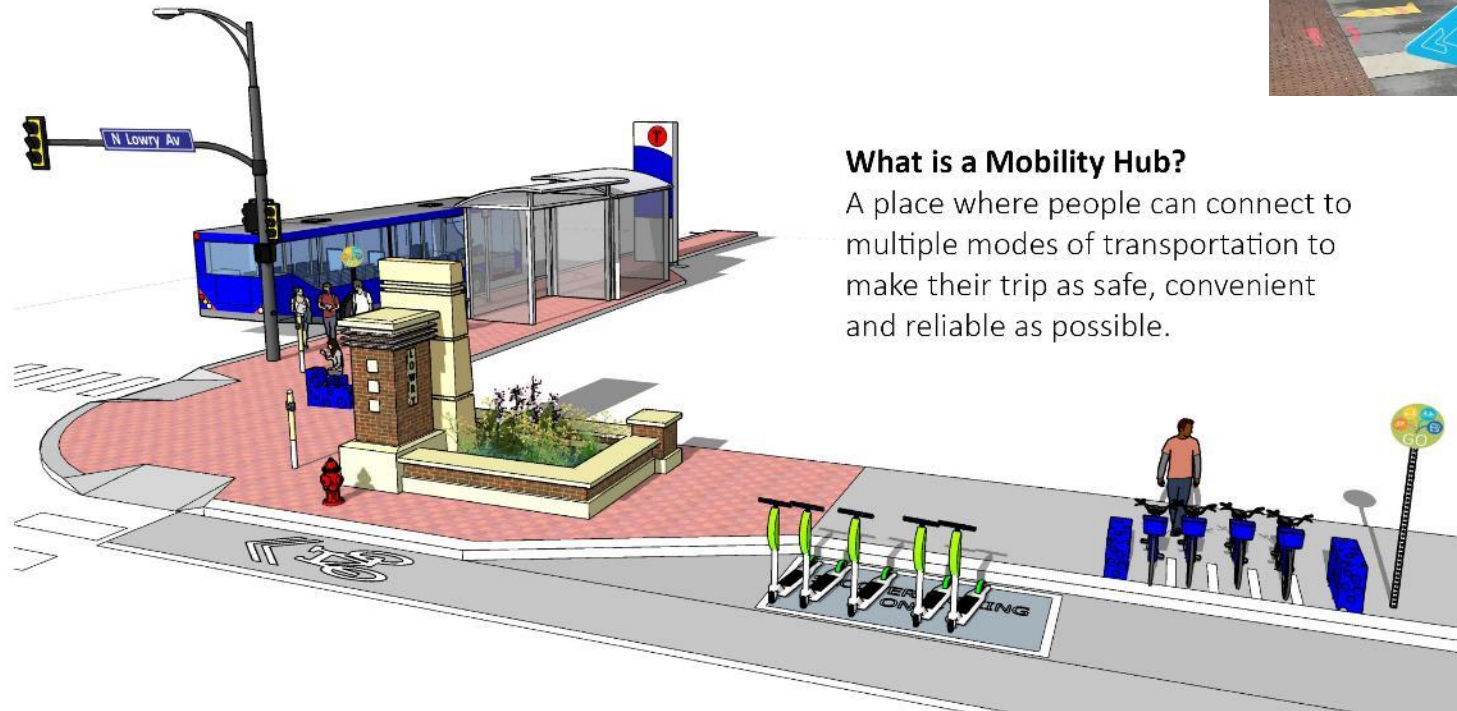


Sustainability

LOCAL

Minneapolis pilots mobility hubs combining transit, scooters and bicycles

By Tim Harlow | The Drive | SEPTEMBER 29, 2019 — 4:55PM

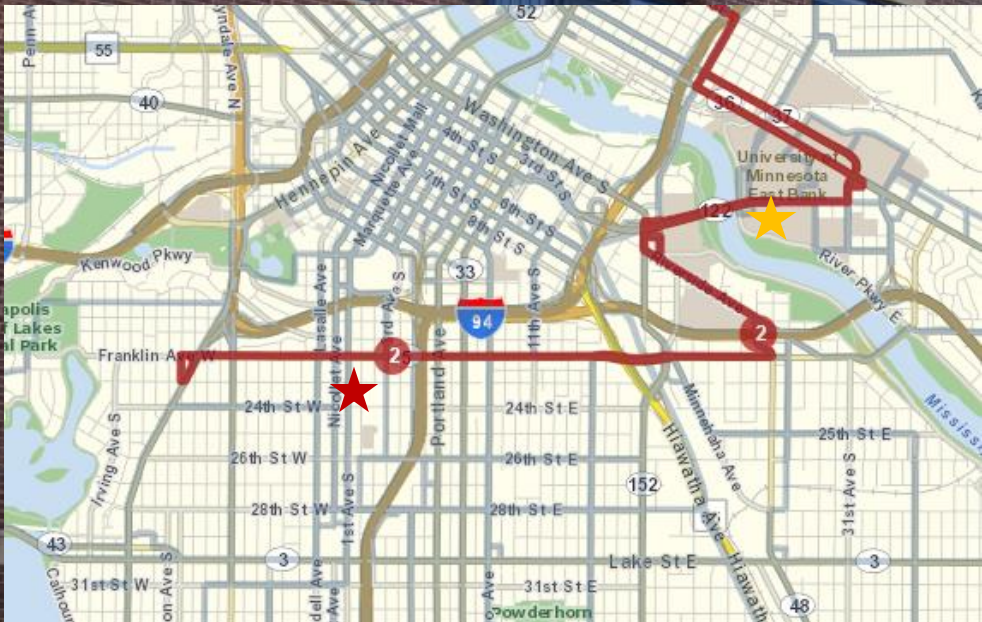


What is a Mobility Hub?

A place where people can connect to multiple modes of transportation to make their trip as safe, convenient and reliable as possible.



Geoff's Journey



AT&T LTE10:45 AM85%

metrotransit.org

MetroTransit

Serving the Minneapolis / St. Paul Area

NexTrip: Real-Time Departures

Franklin Ave E - Nicollet Ave

Stop Number: 56697

NexTrip departs in 2 Min

Current Time: 10:45 am

Text 1-855-340-0035 for NexTrip by Text while we work on a long-term fix.

Route	Departs
2C Franklin Av/To Central/U of M	2 Min
2C Franklin Av/To Central/U of M	11 Min
2C Franklin Av/To Central/U of M	11:06
2C Franklin Av/To Central/U of M	11:16
2C Franklin Av/To Central/U of M	11:26
2C Franklin Av/To Central/U of M	11:36
2C Franklin Av/To Central/U of M	11:45

Real Time

Scheduled

BACK TO STOP

SHOW MY BUS

<

>

Q

26

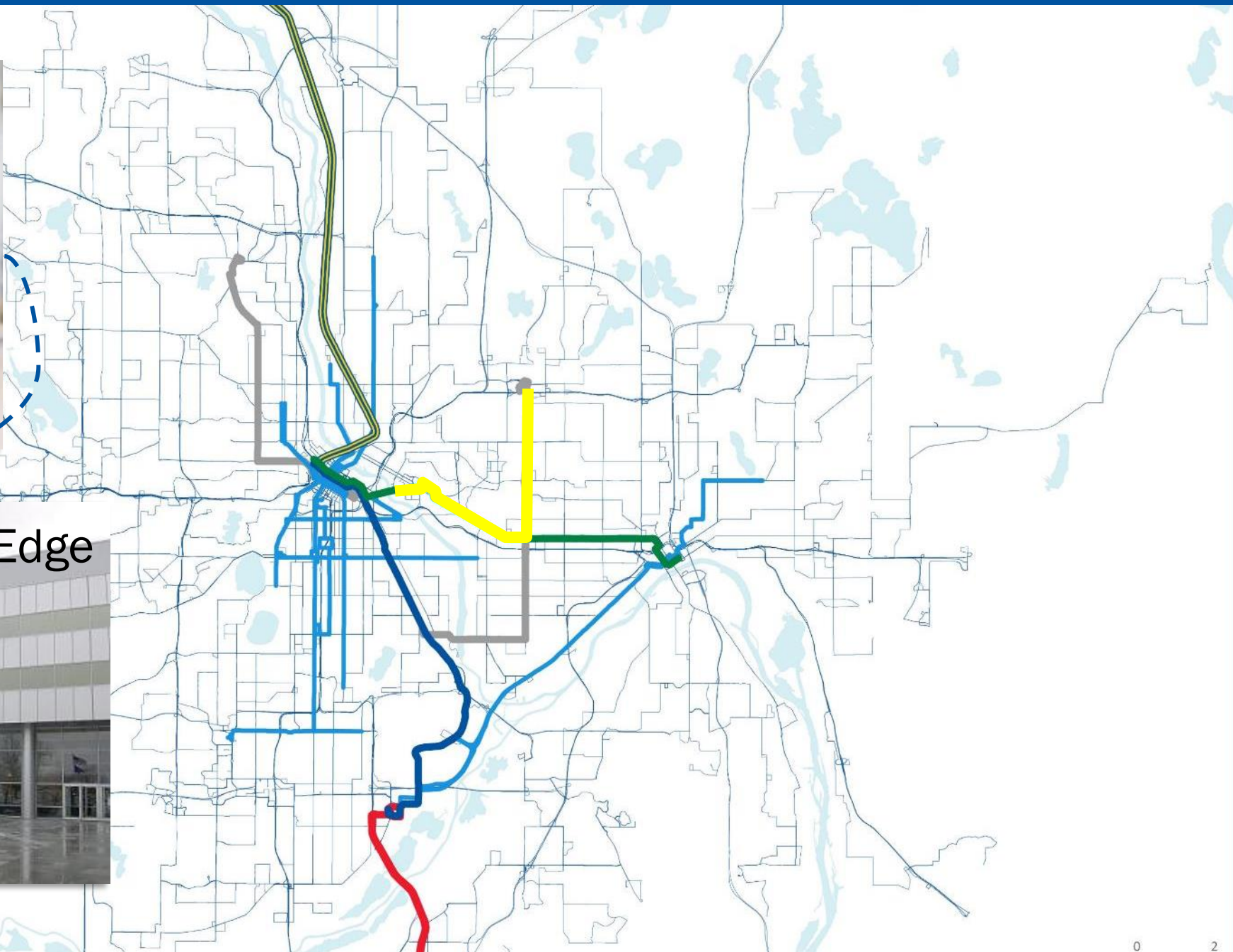
...





Geoff

MnDOT Waters Edge







Rethink streets for transit

Invest in a quality customer experience

Nurture strong partnerships

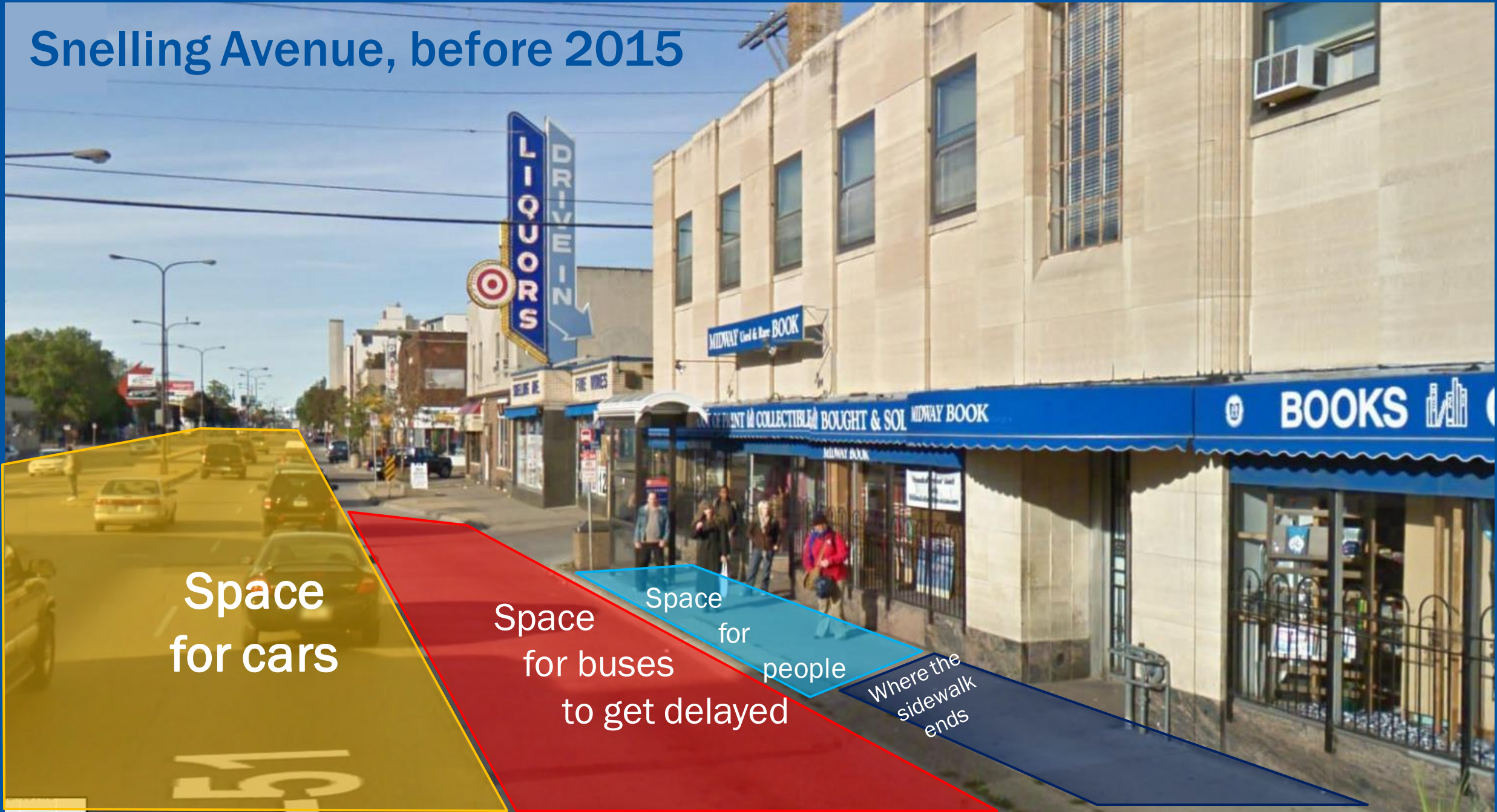
Snelling Avenue, before 2015

Space
for cars

Space
for buses
to get delayed

Space
for
people

Where the
sidewalk
ends





Space for cars

Space for people
and a dignified, sheltered wait

Continuous
sidewalk



BIG shout-out to Metro Transit for getting the A-Line stations plowed and spiffy using their super-cool snow cats so that elderly gentlemen can get around safely.



Rethinking streets for useable year-round transit stops

- Sheltered stops with heat, and security features
- Real-time bus countdown signs
- Fares collected at the station, not on the bus



Rethinking streets for the transit customer



Rethinking streets in partnership



Rethinking streets in partnership

Penn
Avenue
Summer
2017



Penn
Avenue
Summer
2019

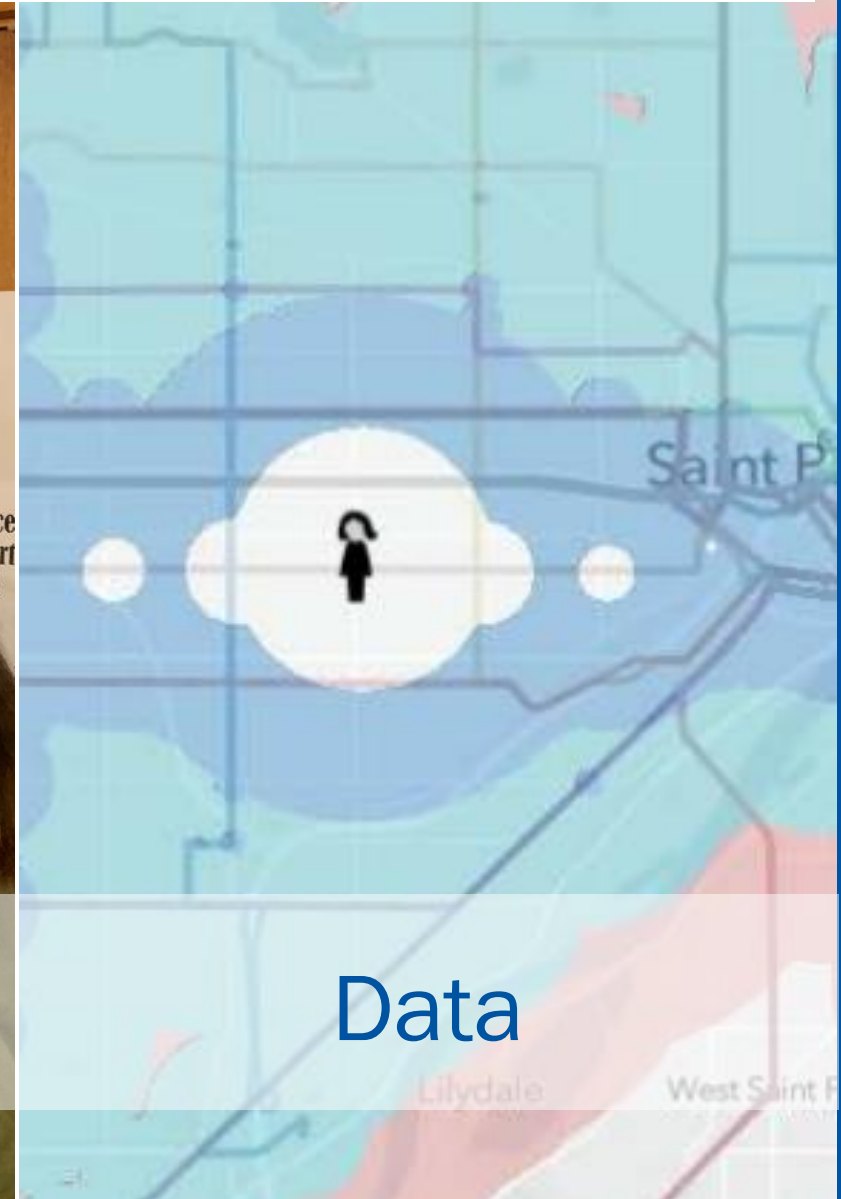
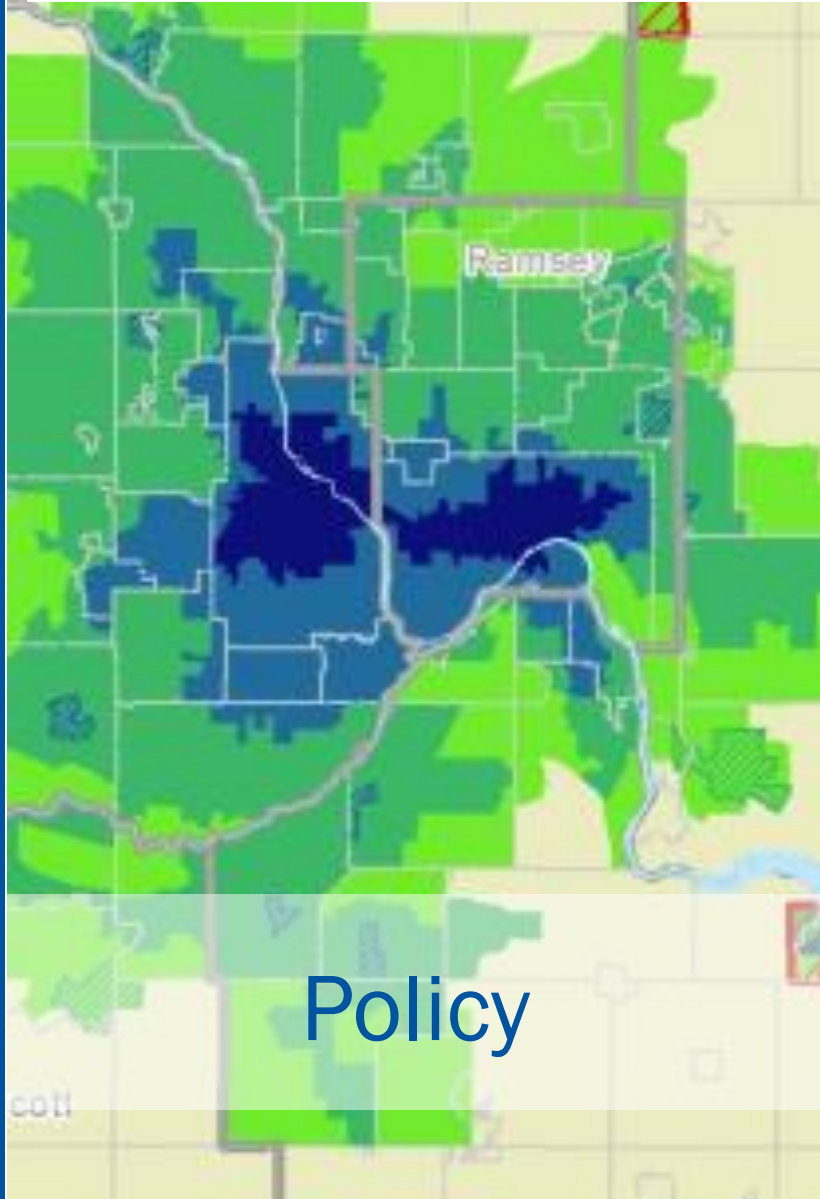




Network**NEXT**

Building tomorrow's bus network, starting today.

Guiding the vision for the bus network of tomorrow



Network Next



Expanded Local and Express Bus



New Arterial Bus Rapid Transit Lines



Integrated Shared Mobility Options



for a future of abundant access tomorrow

